

**Red-Colored Pavement for Public Transit Systems**  
From the 11<sup>th</sup> Edition of the Manual on Uniform Traffic Control Devices  
Pg. 626-629: Section 3H.07  
December 2023

**Section 3H.07 Red-Colored Pavement for Public Transit Systems**

Support:

01 Red-colored pavement is used to enhance the conspicuity of locations, station stops, or travel lanes in the roadway exclusively reserved for vehicles of public transit systems or multi-modal facilities where public transit is the primary mode. These public transit vehicles include buses, streetcars, trolleys, light-rail trains, and rapid transit fleets.

Option:

02 Red-colored pavement may be used where engineering judgment determines that one or more of the following conditions are expected to result from its application:

- A. Increased travel speeds will be expected by the public transport vehicle after an exclusive lane or facility is provided,
- B. Reduced overall service time through the corridor will be expected by the public transport vehicle,
- C. Decreased rates of illegal parking or occupation of the transit or multi-mode lane or facility will be expected.

**Standard:**

03 **If used, red-colored pavement shall be applied only in lanes, areas, or locations where general-purpose traffic is not allowed to use, queue, wait, idle, or otherwise occupy the lane, area, or location where red-colored pavement is used.**

04 **Red-colored pavement shall be installed for the full width of the lane.**

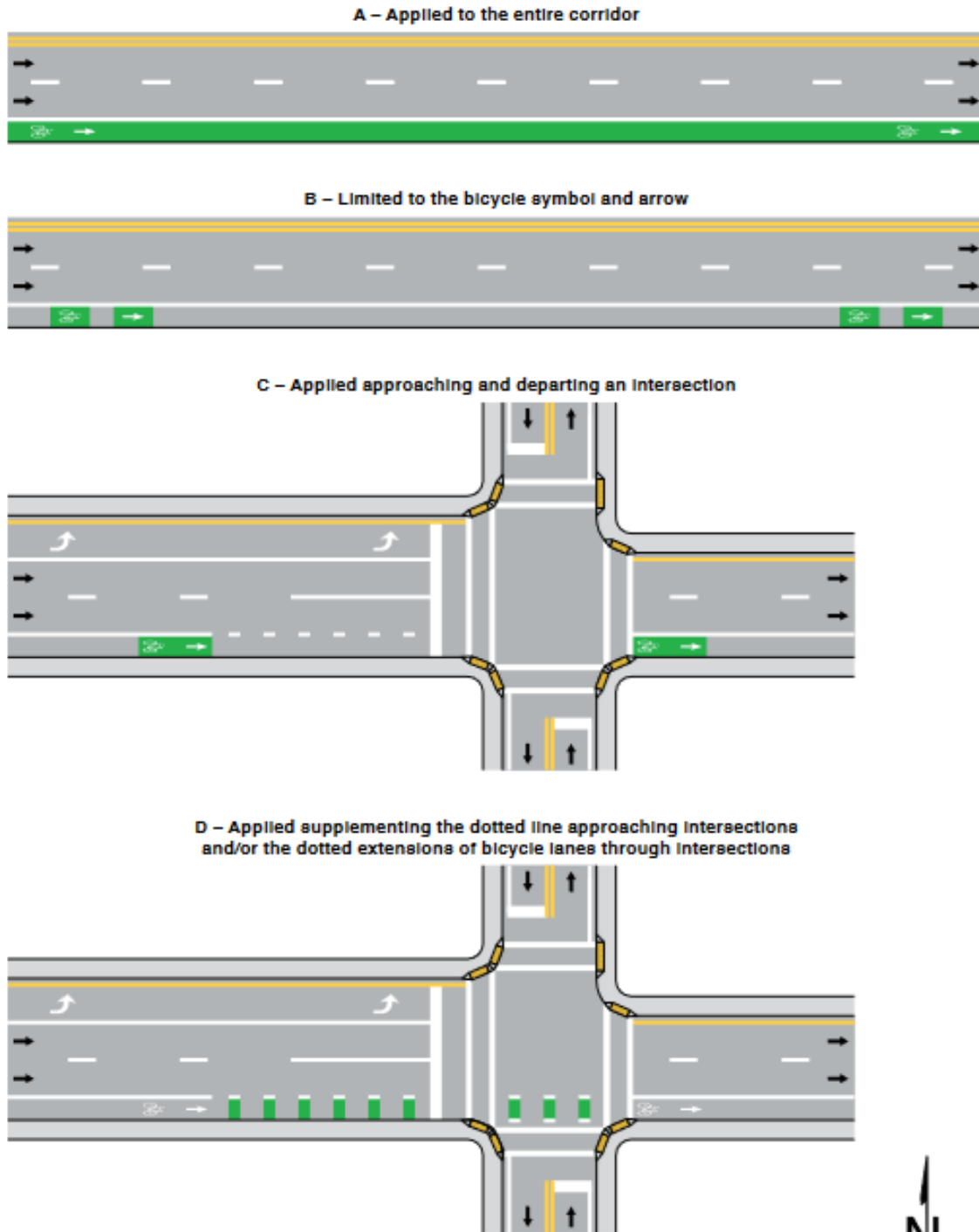
Option:

05 Red-colored pavement may be used for full-time or part-time operations.

06 Red-colored pavement may be installed for the entire length of a restricted lane or for only a portion (or portions) of the restricted lane.

INTL 07 Red-colored pavement may be installed in a broken pattern where entrance into the transit lane is permitted by general traffic, for example where general traffic is allowed in a transit lane in advance of a turn.

**Figure 3H-4. Examples of Green-Colored Pavement Applications**



- Notes:
1. The use of colored pavement is optional.
  2. See Chapter 9C for bicycle facility markings.

Legend  
 → Direction of travel



**Red-Colored Pavement for Public Transit Systems**  
From the 11<sup>th</sup> Edition of the Manual on Uniform Traffic Control Devices  
Pg. 626-629: Section 3H.07  
December 2023

Page 628

MUTCD 11th Edition

**Standard:**

- 00 **Regulatory signs (see Sections 2B.02 and 2G.03) shall be used to establish the allowable use of the lane, area, or location. Regulatory signs shall also be used when it is determined that other vehicles will be allowed to enter the lane to turn or bypass queues.**

*Guidance:*

- 00 *If red-colored pavement is used on public transit facilities separated from the roadway or on facilities on an independent alignment, it should be used only at the entrances to those facilities from roadways open to public travel.*

*Support:*

- 10 Examples of applications of red-colored pavement are shown in Figure 3H-5.

**Section 3H.08 Purple-Colored Pavement for Electronic Toll Collection (ETC) Account-Only Preferential Lanes**

**Standard:**

- 01 **Purple-colored pavement shall be limited to:**
- A. Lanes on the approach to a toll plaza where the lane is restricted to use only with a registered ETC account; and
  - B. Lanes or approaches to an open-road tolling (ORT) collection facility that bypasses the physical toll plaza, where the ORT facility is restricted for use only by vehicles with registered ETC accounts.
- 02 **Purple-colored pavement shall not be used in an approach lane that also facilitates additional payment methods downstream.**
- 03 **If used approaching a physical toll plaza, purple-colored pavement shall be flanked by white solid longitudinal lines that establish the toll lane.**
- 04 **If used on an ORT collection facility that bypasses the physical toll plaza, purple-colored pavement shall be flanked by appropriate edge lines, and if applicable in multi-lane bypasses, appropriate longitudinal solid or broken white lane lines.**

*Option:*

- 05 Purple-colored pavement may be installed for the entire length of a toll lane or ORT collection facility or for only a portion (or portions) of the toll lane or ORT collection facility.

*Support:*

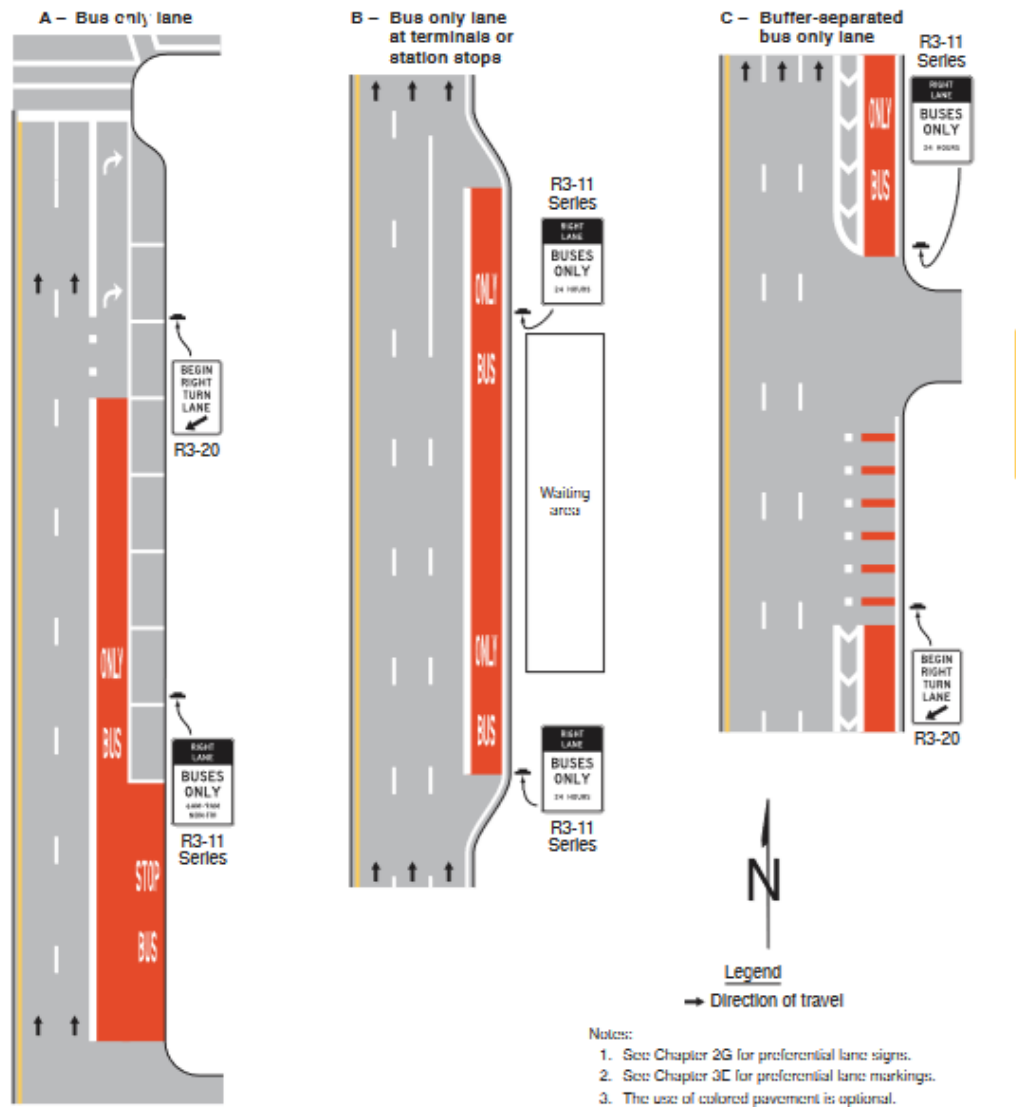
- 06 Figure 3H-6 illustrates examples of purple-colored pavement for use at toll plazas.

**Red-Colored Pavement for Public Transit Systems**  
 From the 11<sup>th</sup> Edition of the Manual on Uniform Traffic Control Devices  
 Pg. 626-629: Section 3H.07  
 December 2023

MUTCD 11th Edition

Page 629

**Figure 3H-5. Examples of Red-Colored Pavement Applications**



December 2023

Sect. 3H.08